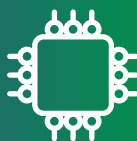


# Empowering a scientific approach to tanning

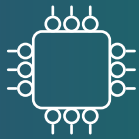


**SMART DRUM**

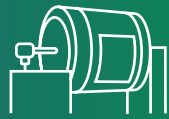
**ITALPROGETTI**

 **SPIN 360**

# Functionalities



Data **acquisition**



**Pilot processes** using the simulated modifications



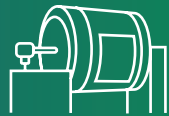
**Assessment** of environmental impacts and costs



**Leather quality check**



**Identification** of the most important contributors



**Industrialisation** of the modified processes



**Simulation** of the effects of process modifications



**Monitoring** of process performances

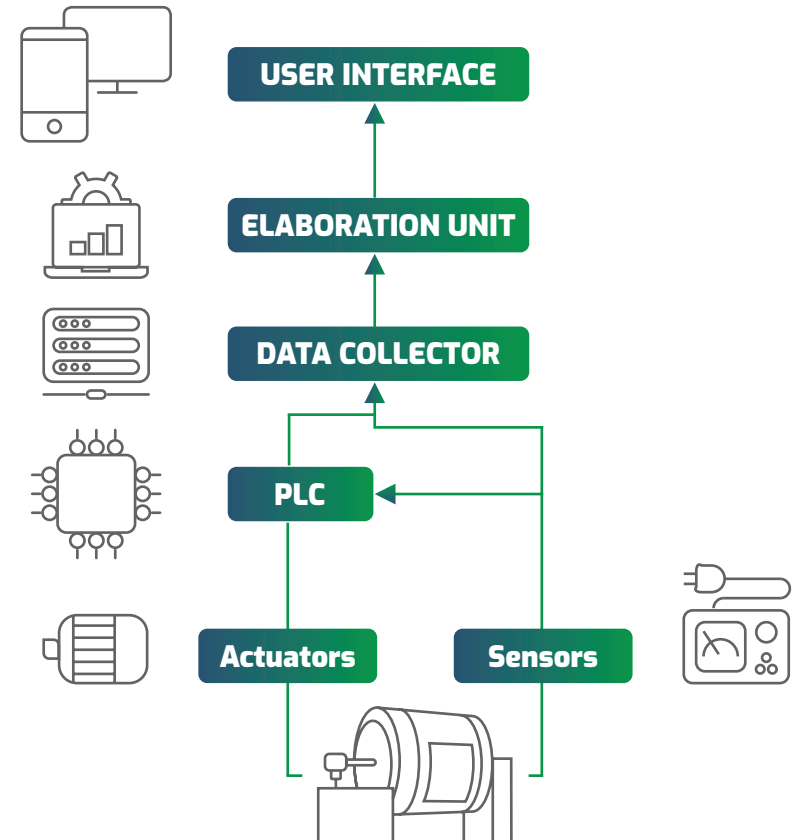


Smart sensors connected with elaboration units and intelligent software allow to obtain real time process data and consumption of energy and resources

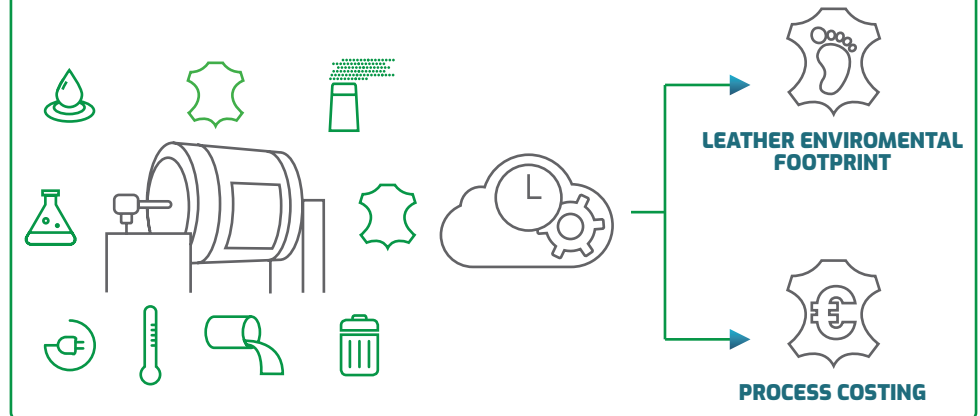
All data are visualised in advanced human machine interfaces and are provided to technicians.

*Technicians of tanneries are enabled to scientifically analyse the performances of their processes, formulate hypothesis for improvement, test their ideas, validate the results.*

# How Smart Drum works



## Process data elaboration



# Improvement

Smart Drum empowers a process of continuous improvement of the tanning processes: assessing impacts and costs, simulates process performances with the aid of advanced software, defines new production recipes with lower impacts and costs, tests them and verifies leather quality.

